



FOX **Hall Village**
YOU. ME. WE BELONG

A vibrant, modern residential street scene. The houses are multi-story, featuring a mix of colors including white, light green, orange, and grey. They have dark grey roofs and large windows. The street is paved with dark asphalt and has a brick-paved sidewalk. There are several young trees planted along the sidewalk. In the foreground, a man and a woman are walking away from the camera. Further down the street, a silver car is parked, and another person is standing near a house. The sky is blue with scattered white clouds.

Stylish homes, a vibrant new community and a bold vision for the future; Foxhall Village, by Hollinwood Homes, is the flagship of a bright new era for Blackpool.



Creating a new community

Working with one of the world's prestigious architecture firms, Broadway Malyan, Hollinwood Homes will create a brand new community.

Foxhall Village, a £50 million stunning scheme that is at the heart of Britain's favourite resort, sits in harmony with its seaside surroundings that is mirrored in the contemporary high quality new homes.

The 400 homes will comprise two, three and four bedroom houses and apartments each with its own distinctive identity. These energy efficient homes will nestle in green open spaces which are linked to the promenade and town centre via specially designed walkways and cycle-paths.

Home owners can also enjoy exclusive use of open spaces and purpose-built play areas within the Village, offering abundant room to play and relax in complete privacy.

At Foxhall Village you will find:

A place where families can grow, children thrive and a community can strengthen

A place that is safe and secure

A place that embraces the latest thinking in house building

A place that is yours to call 'home'... a place where you, me, we belong.





What's around and about?

Quite a lot. Foxhall Village is a pebble's throw from the beach and the Fylde coast's seven miles of golden sands. It's also a hop skip and jump away from Blackpool's Promenade. The Tower and one of Britain's most visited attractions – Blackpool Pleasure Beach which is home to the Big One.

The historic Central Pier and spectacular Tower Ballroom, to the renowned Winter Gardens and magnificent Stanley Park are all within a brisk walk or you could turn around and walk 5 mins and you can see some of the best football being played in the region at Blackpool FC.

Most homes in Foxhall Village will also have impressive views

of the iconic Blackpool Tower, underlining the unique quality of the location.

If you want to venture further afield, Blackpool has easy access to the region's motorway network, with the M55 linking directly with the M6. Manchester, Liverpool and the breathtaking scenery of the Lake District National Park are all within an hour's drive. If you want to go to the capital, jump on a train and you'll be there in three hours. Furthermore, Blackpool has its own international airport with regular flights to an ever-growing list of holiday and business destinations to choose from.



The history of Foxhall Village

In the 17th century, Foxhall Square was the site of the first house of substance built in Blackpool, called Fox Hall. Since then the area around Rigby Road has evolved over the years. More recently Blackpool Borough Council identified the area as key area of regeneration.

This is where Hollinwood Homes came forward and presented a new vision for Foxhall. Its' answer was to devise, design and create a new village – a new development that would have a positive impact.

The view was to build something more than just a lot of houses. It was a chance to help build civic pride, show that investment was being made not just in tourism but also for the people who live in Blackpool.

Foxhall Village had to be of distinctive character, set a benchmark in building design, create a secure environment and nurture a new community.

Welcome to Foxhall Village. You. Me. We belong.

Local amenities

Blackpool offers all the local amenities you'd expect from a large and thriving town, including supermarkets, gyms, leisure centres, bars, restaurants and health centres.

Nearby supermarkets include Tesco and Marks & Spencer, making shopping for essentials a breeze. For those larger purchases, Squires Gate Retail Park is 15 minutes away. Families will also benefit from a number of highly rated primary and secondary schools in the area.



About Hollinwood Homes

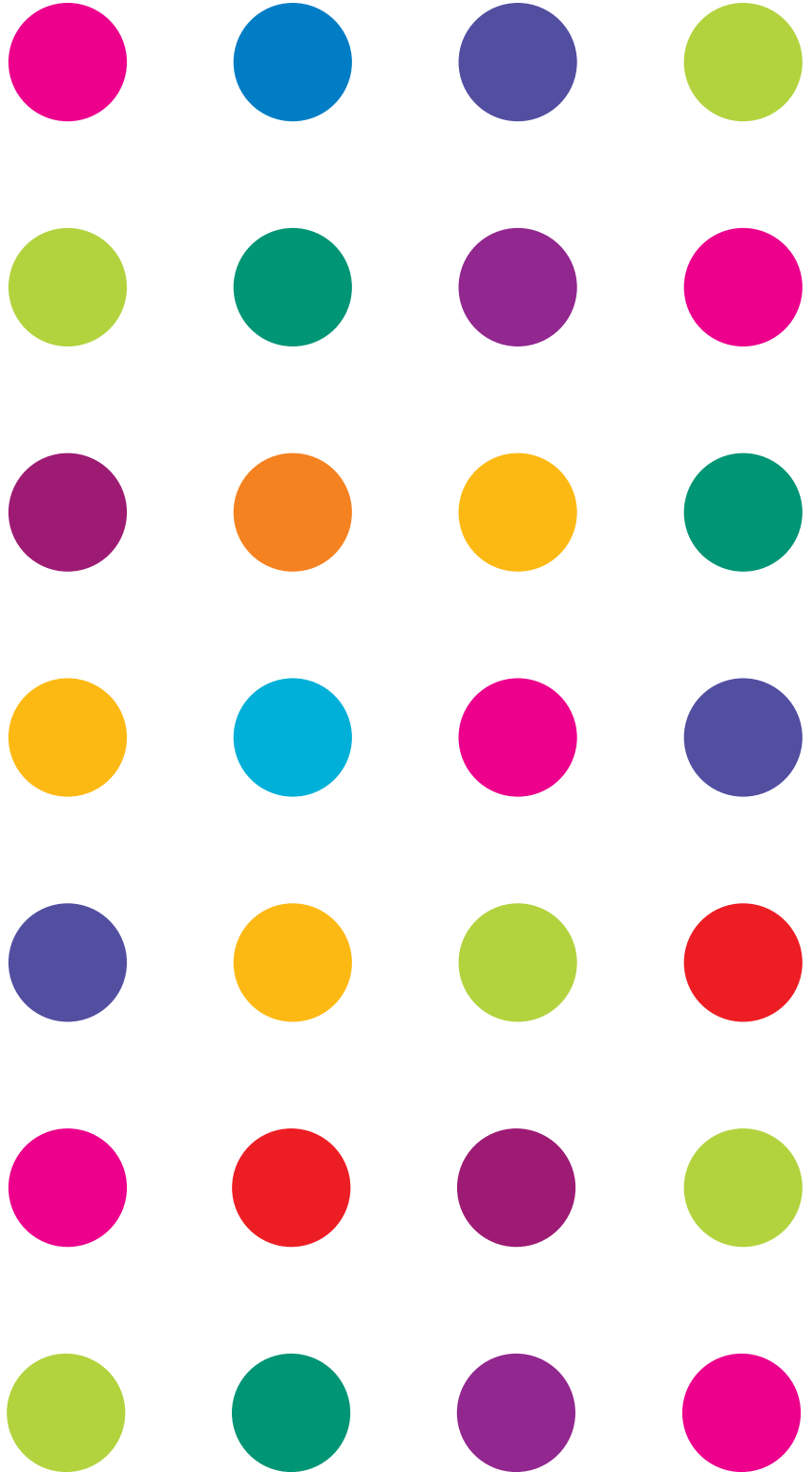
The residential property division of The Marcus Worthington Group, Hollinwood Homes' aim is to develop quality homes with a focus on value for money.



The driving principle of a Hollinwood Homes development is an absolute emphasis on quality of space, both within the home and externally. This means that all developments are focused around quality green spaces providing both play and recreational areas for all ages.

Hollinwood Homes is proud to be an environmentally conscious developer, building sustainable homes in sustainable locations without compromising on quality.

At heart a family business, Hollinwood Homes appreciates the importance of the **place called home.**





Development Address:

Rigby Road
Blackpool
FY1 5EP

You can get to Foxhall Village by:

CAR:

Use post code FY1 5EP. Take junction 32 off the M6, and the M55 will lead you almost to the beach. Look for signs to Blackpool Football Club and we are just a couple of minutes away from the ground.

TRAIN:

Look for trains running to Blackpool North. Foxhall Village is approximately 1 mile south of the station. Head toward the Promenade, then walk south past the Tower and the Illuminations until you can see the entrance to Rigby Road. Take a left here and after 200 metres you will see the development.

BUS and TRAMS

Blackpool has a high frequency tram and bus service running in and around the Fylde.



Call for more information:

01995 640690

www.foxhallvillage.co.uk

Brockholes Pavillion, Brockholes Way
Claughton-on Brock, Preston PR3 0PZ
www.hollinwoodhomes.com